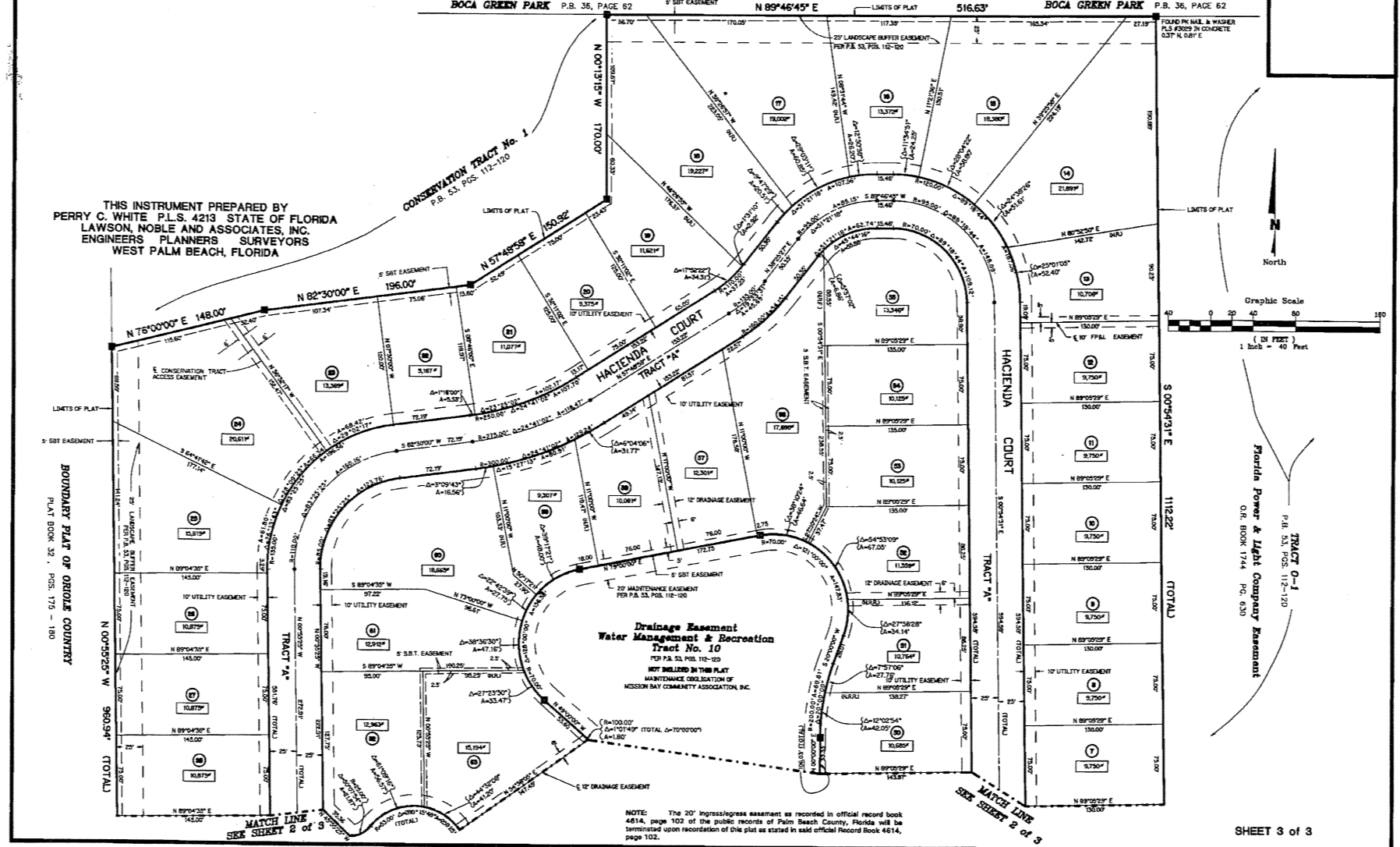


MISSION BAY - TRACT A

(A PART OF A P.U.D.)
A REPLAT OF TRACT A OF THE PLAT OF MISSION BAY, A P.U.D.
AS RECORDED IN PLAT BOOK 53, PAGES 112-120 OF THE PUBLIC RECORDS OF
PALM BEACH COUNTY, FLORIDA, SECTION 14, TOWNSHIP 47 SOUTH, RANGE 41 EAST
SHEET 3 OF 3 FEBRUARY, 1992

457-016

59



THIS INSTRUMENT PREPARED BY
PERRY C. WHITE P.L.S. 4213 STATE OF FLORIDA
LAWSON NOBLE AND ASSOCIATES, INC.
ENGINEERS PLANNERS
SURVEYORS
WEST PALM BEACH, FLORIDA

Drainage Easement
Water Management & Recreation
Tract No. 10
FOR P.L.S. NO. 10-100
NOT ILLUSTRATED IN THIS PLAT
MAINTENANCE OBLIGATION OF
MISSION BAY COMMUNITY ASSOCIATION, INC.

NOTE: The 20' ingress/egress easement as recorded in official record book 481A, page 102 of the public records of Palm Beach County, Florida will be terminated upon recording of this plat as stated in said official Record Book 481A, page 102.

SHEET 3 of 3